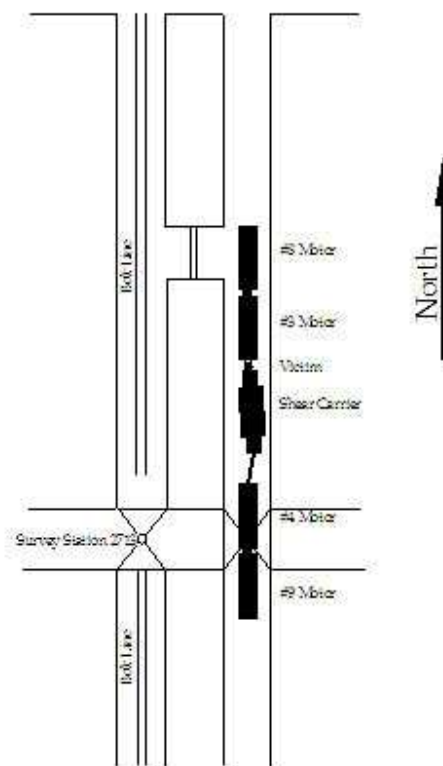


The following accident investigations are from FATAL accidents at USA coal mines

The first one has relevance as regards the correct securing of loads.

1. COAL MINE FATALITY - On Thursday, May 22, 2008, a 64-year old underground locomotive (motor) operator with 25 years experience was fatally injured when he was pinned between his motor and a longwall shearer being transported on a rail type carrier. The victim, three other operators, and a foreman, were transporting the longwall shearer body to a longwall setup section when the carrier derailed as it was moving upgrade. The victim dismantled the #3 motor to assist in rerailing the carrier. He was between the motor and the carrier when the motor(s) slid or rolled back, crushing him between the shearer body and locomotive.



Best Practices

- Never place yourself between rail cars/equipment unless positive stop blocks are in place.
- Always set parking brakes when getting off mobile track equipment.
- Pull, do not push rail cars.
- Always be aware of your location in relation to mobile equipment.

This is the tenth fatality reported in calendar year 2008 in the coal mining industry. As of this date in 2007, there were seven fatalities reported in the coal mining

industry. This is the third Powered Haulage fatality in 2008. At this time in 2007, there were no fatalities in this classification. **This accident has relevance at all operations where road maintenance is carried out.**

2. COAL MINE FATALITY - On Friday, May 30, 2008, a general inside laborer with four weeks experience was fatally injured when he was struck by a battery powered scoop. The victim was assisting two other miners repair a haul road. The scoop operator had just changed out the scoop batteries and picked up a load of gravel. The victim was traveling on foot and was being followed by the scoop and a diesel road grader. While in route, the scoop operator inadvertently struck the victim causing fatal injuries.



Best Practices

- Remain a safe distance from moving equipment until it has passed.
- Walk behind moving mobile equipment when traveling in the same entry.
- When operating mobile equipment, ensure that other workers are in a safe area before moving the equipment.
- When necessary to walk or work in the area of moving mobile equipment, wear reflective clothing to ensure a high visibility.
- Always assume the mobile equipment operator has not seen you unless eye contact is confirmed.

This is the eleventh fatality reported during calendar year 2008 in the coal mining industry. As of this date in 2007, there were seven fatalities reported in coal mining. This is the fourth fatality classified as powered haulage in 2008. There were no fatalities in this category at this time in 2007.

Brian Roberts
Office 011-441-6830
Mobile 082-419-1204
E-Mail Brian.ROBERTS@coal.total.co.za